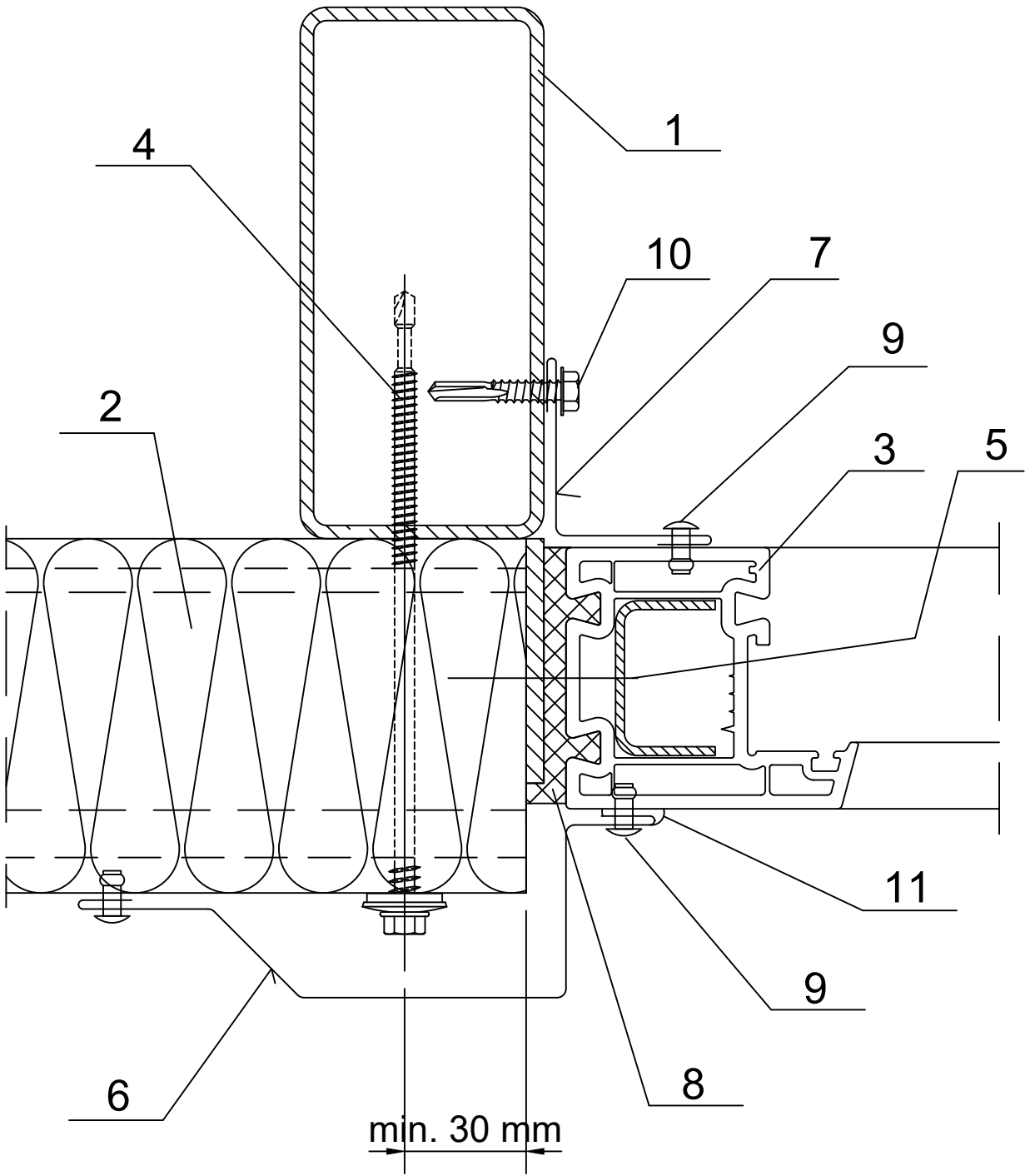


Data	Data zmiany	Oznaczenie szczegółu	Nr rysunku	Zmiana
Opracował Ruukki	Zmiana	M30/S31	-	
Skala 1:2	Obiekt	Nr pliku P2001/003-00040		



- 1. Steel column acc. to engineering design of the structure
- 2. Ruukki SP2D PIR.
- 3. PCV window
- 4. Panel fastener for hot-rolled column or for cold-bent column
- 5. Tap screw for fixing windows (every 500 mm)
- 6. Custom ordered flashing.
- 7. Custom ordered flashing.
- 8. Expanding foam
- 9. Steel rivet Al/Fe (every 300 mm)
- 10. Tap screw for metal sheet
- 11. Permanently elastic sealing compound